

PORTION OF SEC 6, 11/1N, R21E, OR
 Sec 31, T18N, R21E, M.D.B. 8.M.

(46)

03-45

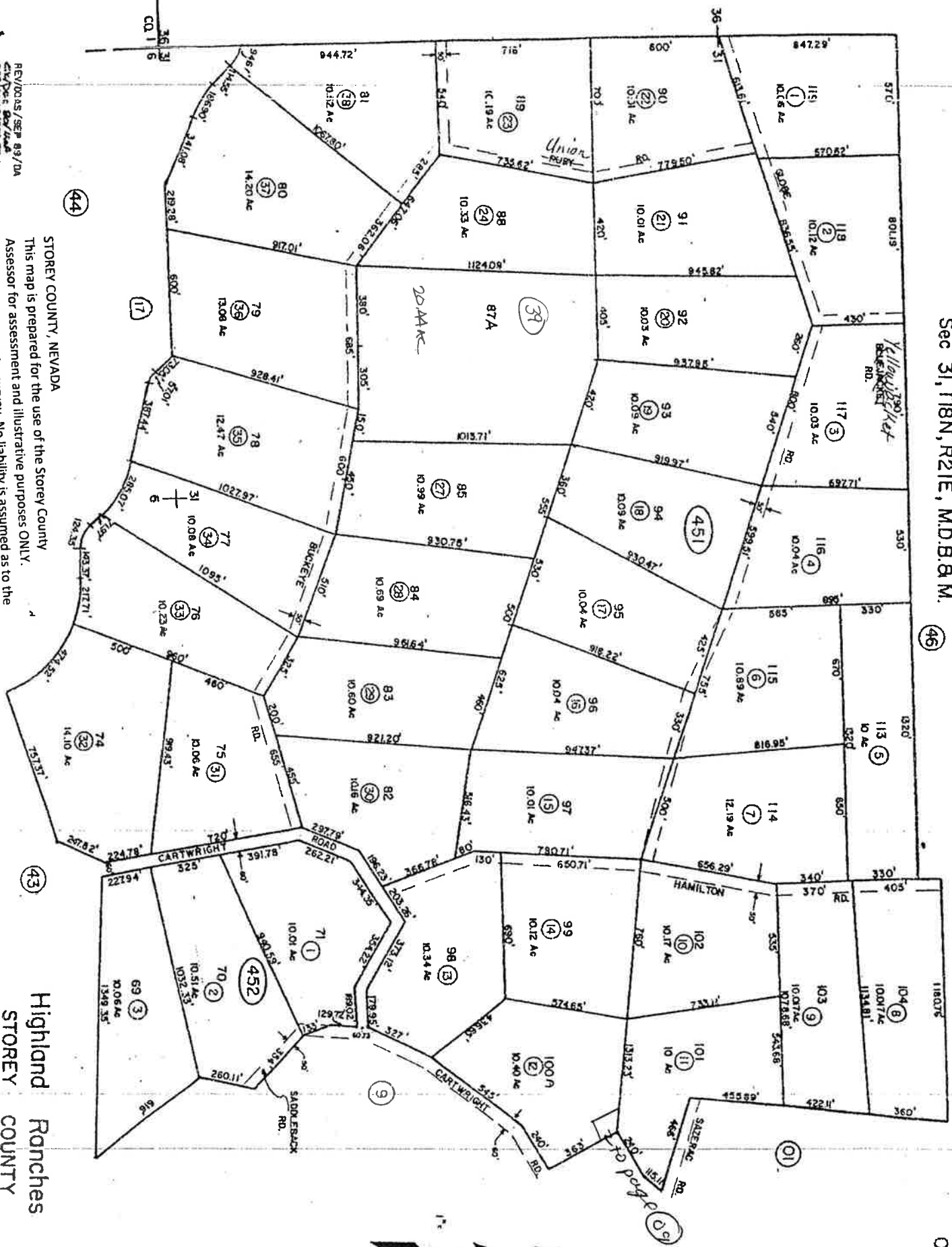
Bk
 04

WASHOE
 CO. 1 6

REV/00AS/SEP/89/DA
 CIV/00AC/08/14/44
 DOT/DIVAS/OCT/79/W6

STOREY COUNTY, NEVADA
 This map is prepared for the use of the Storey County
 Assessor for assessment and illustrative purposes ONLY.
 It does not represent a survey. No liability is assumed as to the
 sufficiency or accuracy of the data delineated herein.

Highland Ranches
 STOREY COUNTY



(44)

(43)

(01)

(00)

(9)

400'